

DIY - Transportable

Steel weighbridge



DIY model is a steel deck weighbridge that delivers proven performance at an affordable price. It is designed in two parts, for quick and easy installation. The first, is the main body which consists of three or five drive modules depending on weighbridge length. Steel foundation can be mounted underneath each module (as an option). The second part, are the side frames which are bolted on each side of the drive modules (yellow painted parts in pictures). These frames work also as guide rails avoiding trucks driving out of the weighbridge. Factory pre-mounted load cells come as standard equipment of the scale. Installation time on site is reduced in half a day (all load cells have two direction bumpers. Top access to load cells and junction box is possible for easy maintenance and service.

Basic features

- Pre-mounted load cells
- Top access to load cells and junction box
- Complete steel and modular construction
- Perfectly suited for temporary sites
- Side frames working as guide rails

Options:

- Pre-mounted, pre-fabricated steel foundation (SF15 & SF140)
- Transportable steel ramps
- Galvanized version

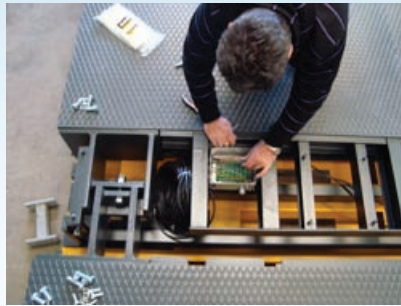
Features and Benefits

DIY trasportable steel weighbridge



Side frames as standard equipment

Side frames are bolted on each side of the drive modules (yellow painted parts in pictures). These frames work as side rails guiding the truck driver and preventing the vehicle to getting out of the scale.

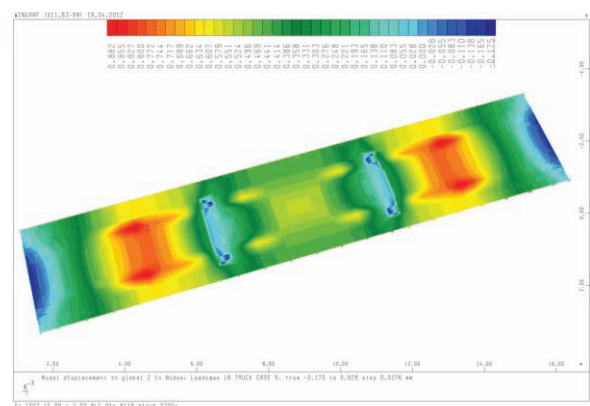


Factory pre-mounted load cells

Factory pre-mounted load cells come as standard equipment of the scale. As a result the installation time on site is reduced in half a day. (Note that all load cells have 2 direction bumpers. Top access to load cells and junction box allows easy maintenance and service.

Finite Element Analysis (FEA) Technology

Our structural design team incorporates the latest of Finite Element Analysis (FEA) technology to analyze in detail the exact stress condition of the weighbridge when subjected to operational and environmental loads. Thus an optimum and robust weighbridge design is achieved that ensures high durability and accurate functionality during operation.



Technical Data

DIY trasportable steel weighbridge

Specifications	
Platform length	6m to 24m
Platform width	3m
Deck plate thickness	6mm or 8mm
Profile	360mm
Steel type	ST37
Capacity	30 t scale length up to 9m
	60 t scale length up to 18m
	80 t scale length up to 24m
	120 t scale length up to 20m
Loading capacity	10t per truck axle - DIN 8119
	20t per truck axle - DIN 1072

Recommended options & accessories



SF15 & SF140 steel foundation

SF15 and SF140 are pre-fabricated pre-mounted steel foundations that can be put directly on compacted earth, horizontal concrete surface with minimum reinforcement, or asphalt. This is a perfect solution for temporary sites like quarries, asphalt plants, etc



Steel transportable ramps

A set of four steel entry and exit ramps are available as an option with the following specifications:

Width: 1200mm ,Height: **a.** 360mm (combined with existing concrete foundation) **b.** 375mm (combined with SF15) **c.** 500mm (combined with SF140)



Weighing indicator

LD 5218 Leon Engineering indicator has an 16 character, LCD, backlit display, 14.5mm digit height .

Functions: Automatic zero tracking, no motion detection, auto-zero on power-up, zero, tare (max tare effect =-Max), preset tare, net mode, multiple test functions



Analogue load cells

Flintec RC3 compression type load cells certified to OIML R60 and NTEP class III. hermetically sealed steel load cell is rated IP68 for use in all environments.

www.leon-engineering.com

for more information